

structuraldetails

Structural CAD drawings Digital Library

ABOUT

Structuraldetails store offers a large number of structural CAD detailed drawings covering a wide variety of necessary construction details to start and finish a project in no time.

The idea is simple. Use ready made solutions instead of starting from scratch and save valuable time.

MARKET GAP

Few, if any, online CAD digital libraries offer ready CAD detailed drawings, put together all in one place, ready to be used in any project.

CUSTOMERS

Designers spend hours creating new details for projects. For every new drawing, time is needed for researching, problem solving and adjusting to specific situation.

FINANCIALS

Time spent on each design translates into loss of income

UNCERTAINTY

Doing something for the first time is always difficult and surely creates uncertainty of the final outcome

PROBLEM

SOLUTION

CLOSE THE GAP

Our product makes your work easier, and no other library on the market offers the same features and variety

TARGET AUDIENCE

Anyone in the business of preparing structural drawings, either for school projects or construction.

COST SAVINGS

Reduce time spent on each design by 70% thus saving on time.

EASY TO USE

All files are delivered instantly in CAD format for immediate use. Fully compatible and customizable with any CAD software



PRODUCT OVERVIEW

UNIQUE

Largest library of structural detail drawings all put together in one place in .dwg and .dxf formats.

LARGE VARIETY

Covers all construction trades. Library includes drawings for reinforced concrete, steel frame and timber frame designs.

TESTED

Taken from real life projects.

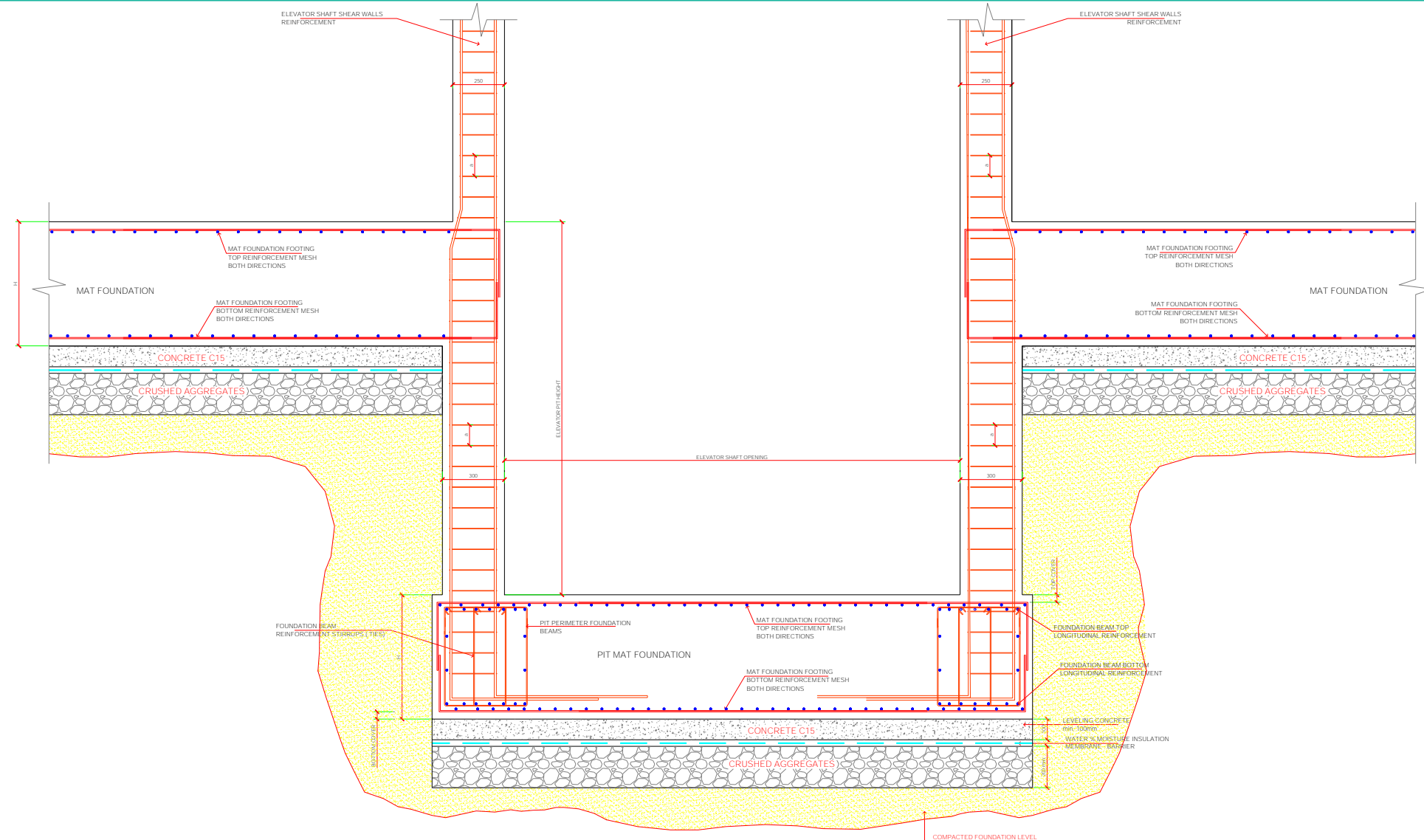
AUTHENTIC

Designed by experts in the field of construction.

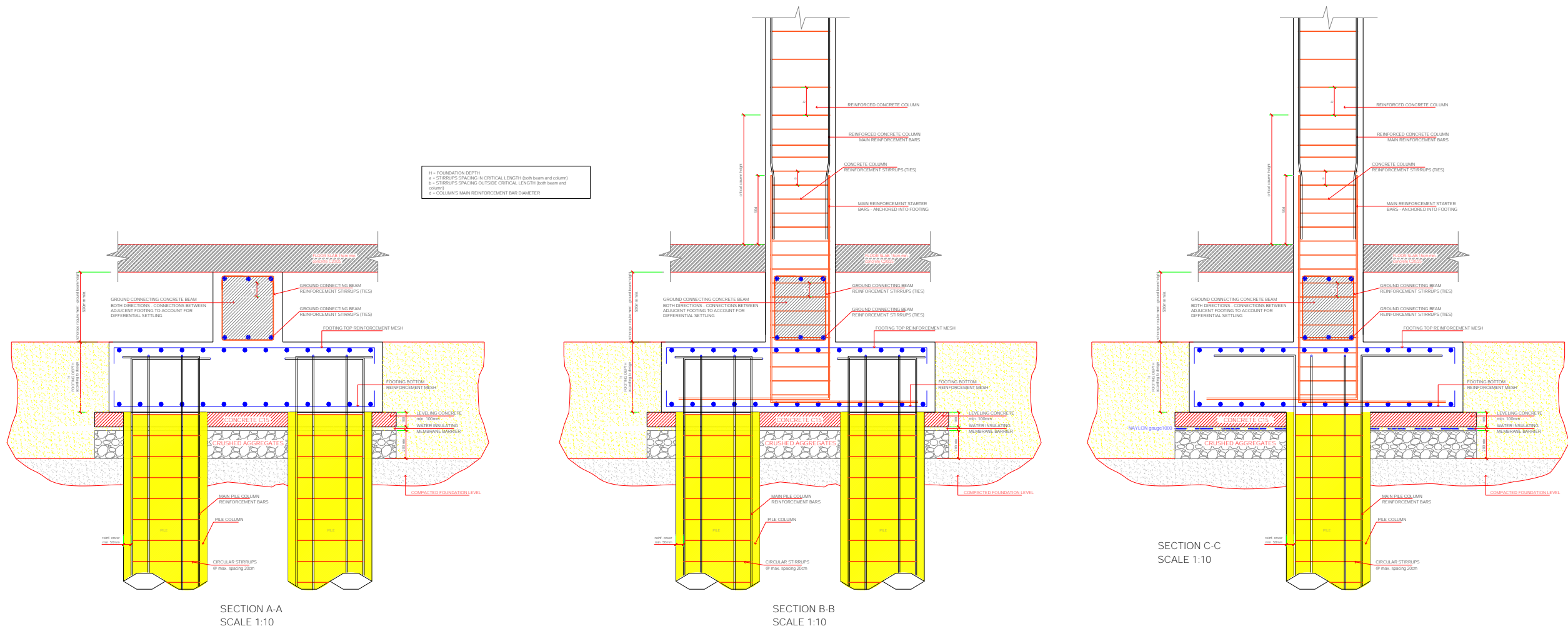
DRAWING SAMPLES

Below is small sample of the drawings included in structuraldetails library to showcase the quality of each drawing.

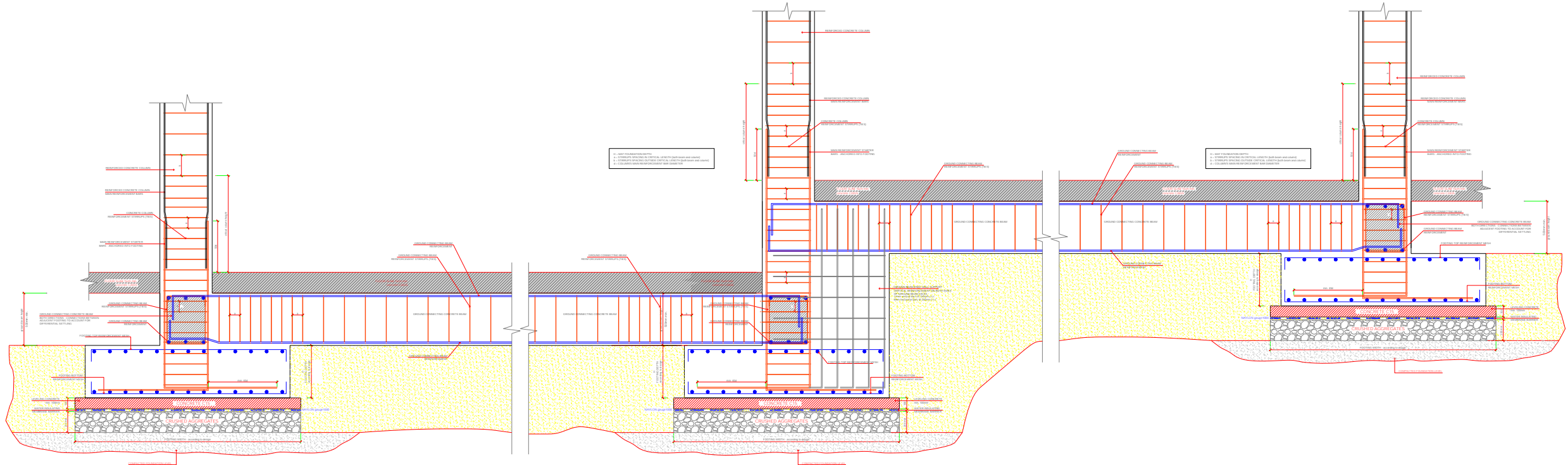
ELEVATOR SHAFT PIT FOUNDATION REINFORCEMENT DETAIL



REINFORCED CONCRETE PILE CAPS DETAILS



STEPPED REINFORCED CONCRETE FOUNDATION FOOTINGS DETAIL



NOT FOR CONSTRUCTION. ONLY TO BE USED AS A TEMPLATE
 STEPPED REINFORCED CONCRETE
 FOOTING FOUNDATION COLUMN SUPPORT DETAIL
 SCALE 1:10

STEEL COLUMN FOOTING FOUNDATION DETAIL

STEEL COLUMN

STIFFENER PLATES (if required)
HEIGHT 150mm
THICKNESS OF PLATES & WELDING
according to design

STEEL COLUMN BASEPLATE
THICKNESS & COLUMN WELDING
according to design

HIGH STRENGTH CONCRETE GROUTING

FLOOR SLAB 15cm min.
concrete C20/25

ANCHOR BOLTS PLACED
INSIDE PIER REINFORCEMENT

PIER COLUMN REINFORCEMENT
according to design

REINFORCEMENT TIES
max. distance 10cm

FOOTING TOP REINFORCEMENT MESH

FOOTING BOTTOM
REINFORCEMENT MESH

CONCRETE C15

CRUSHED AGGREGATES

LEVELING CONCRETE
min. 100mm

WATER INSULATING
MEMBRANE

COMPACTED FOUNDATION LEVEL

FOOTING DEPTH
according to design

anchorage requirement - ground beam height
500mm min.

THIN POSITIONING & LEVELING
BASEPLATE - TO BE REMOVED
BEFORE COLUMN BASEPLATE
INSTALLED

CONCRETE COLUMN PIER
SIZE AND REINFORCEMENT ACCORDING
TO DESIGN - HEIGHT TO MATCH ANCHORAGE
REQUIREMENTS AND GROUND BEAM
HEIGHT

FULL THREAD ANCHOR BOLTS
GRADE 8.8
ANCHORED IN COLUMN PIER
No. & diameter according to design

TIGHTENING BOLT NUTS

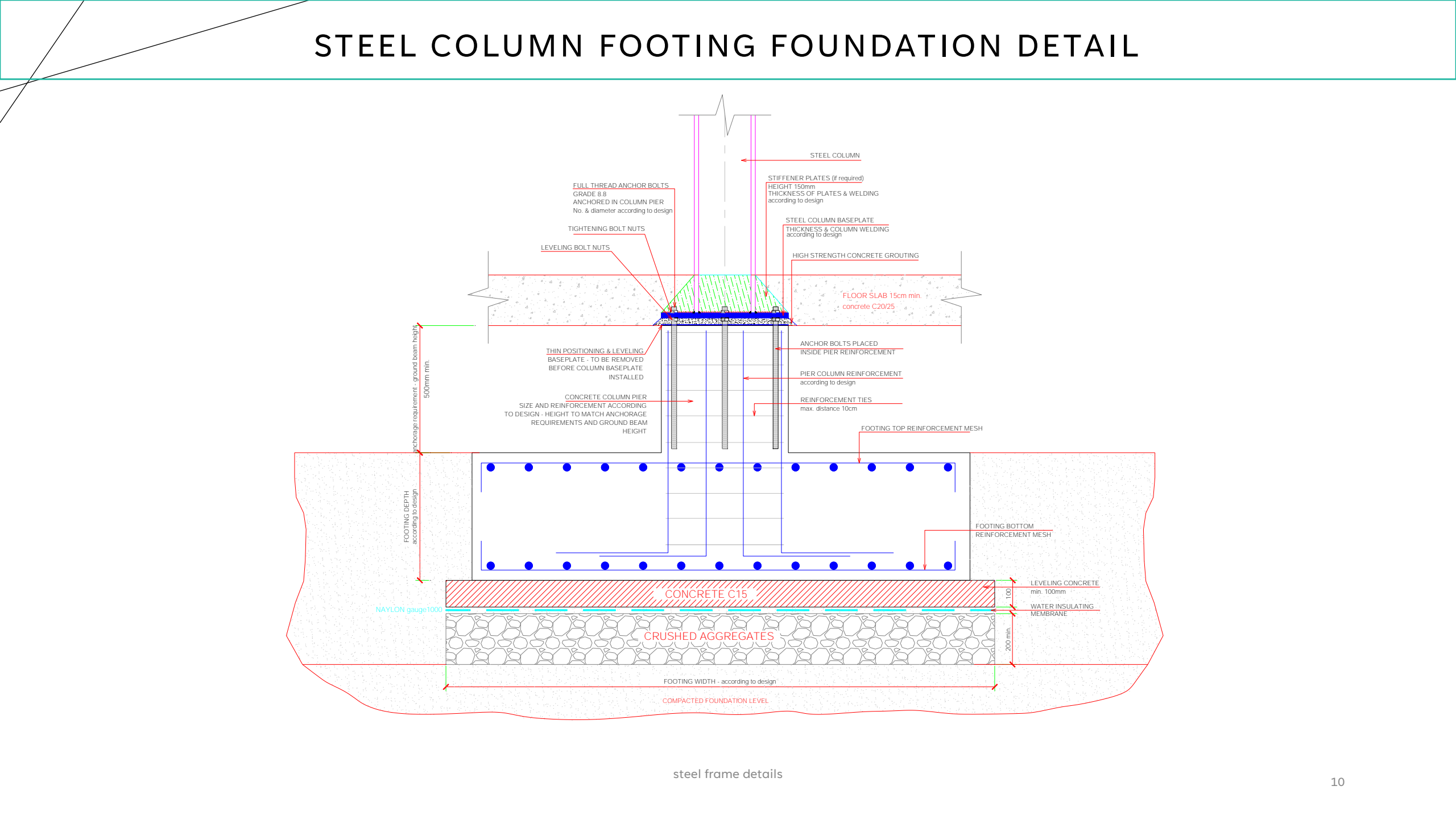
LEVELING BOLT NUTS

NAYLON gauge 1000

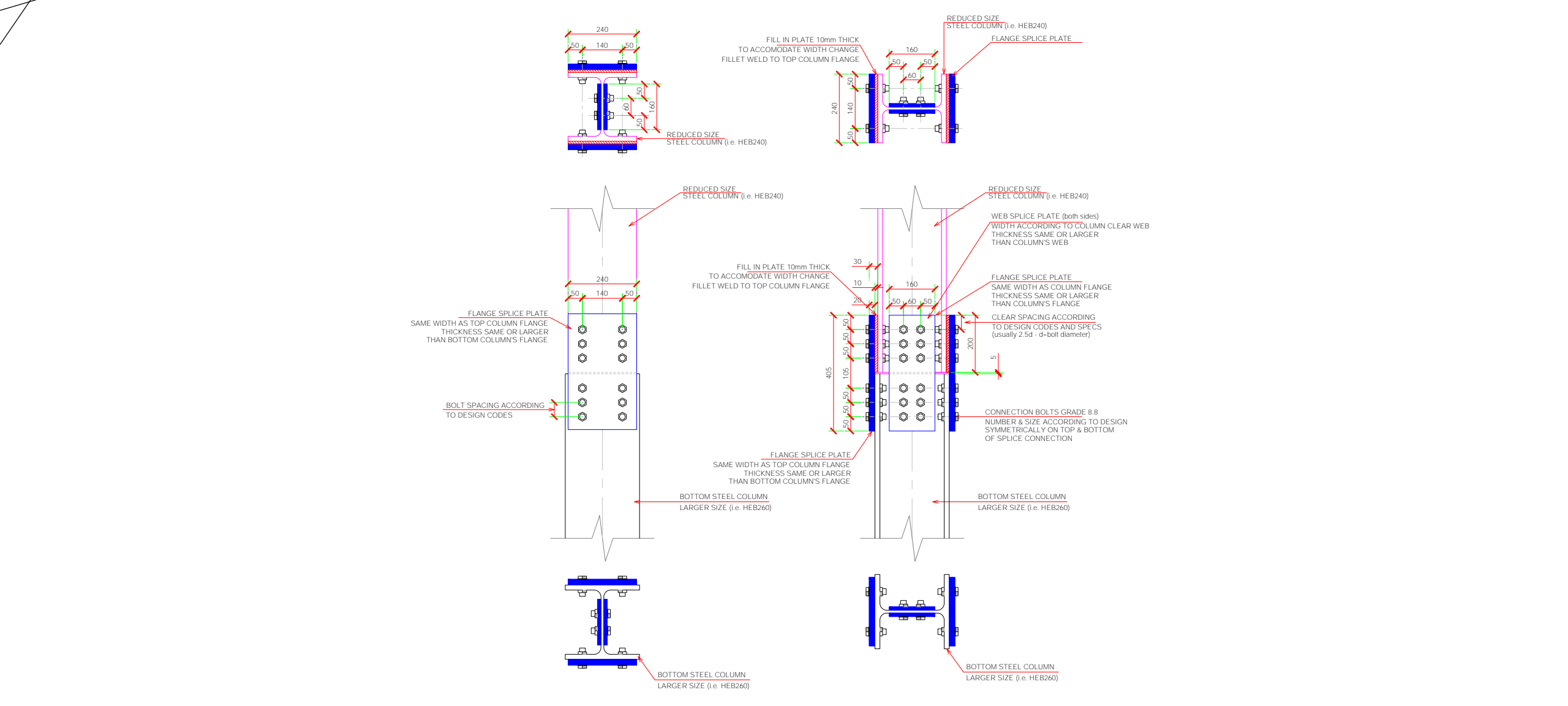
FOOTING WIDTH - according to design

steel frame details

10



REDUCED SIZE STEEL COLUMN BOLTED SPLICE CONNECTION



VERTICAL DIAGONAL CHS X BRACING CENTER CONNECTION DETAIL

The drawing illustrates the connection detail for a vertical diagonal CHS X-bracing center. It consists of two main views: a side elevation on the left and a plan view on the right.

Side Elevation Details:

- VERTICAL DIAGONAL X-BRACING i.e. CHS 139.7x6.3mm SECTION
- 10mm PLATE STIFFENERS - FILLET WELD 6mm ALL AROUND
- 16mm THICK CIRCULAR ENDPLATE - DIAMETER 200mm
FILLET WELD 10mm TO CHS ALL AROUND
- TWO 16mm THICK PLATES, FILLET WELD 8mm TO CIRCULAR ENDPLATE, 1x24mm BOLT GRADE 8.8
- 20mm THICK 8sided POLYGON CONNECTION PLATE
4x26mm BOLT HOLE
- 16mm THICK CIRCULAR ENDPLATE - DIAMETER 200mm
FILLET WELD 10mm TO CHS ALL AROUND
- VERTICAL DIAGONAL X-BRACING i.e. CHS 139.7x6.3mm SECTION
- 16mm THICK CIRCULAR ENDPLATE - DIAMETER 200mm
FILLET WELD 10mm TO CHS ALL AROUND
- 10mm PLATE STIFFENERS - FILLET WELD 6mm ALL AROUND
- VERTICAL DIAGONAL X-BRACING i.e. CHS 139.7x6.3mm SECTION

Plan View Details:

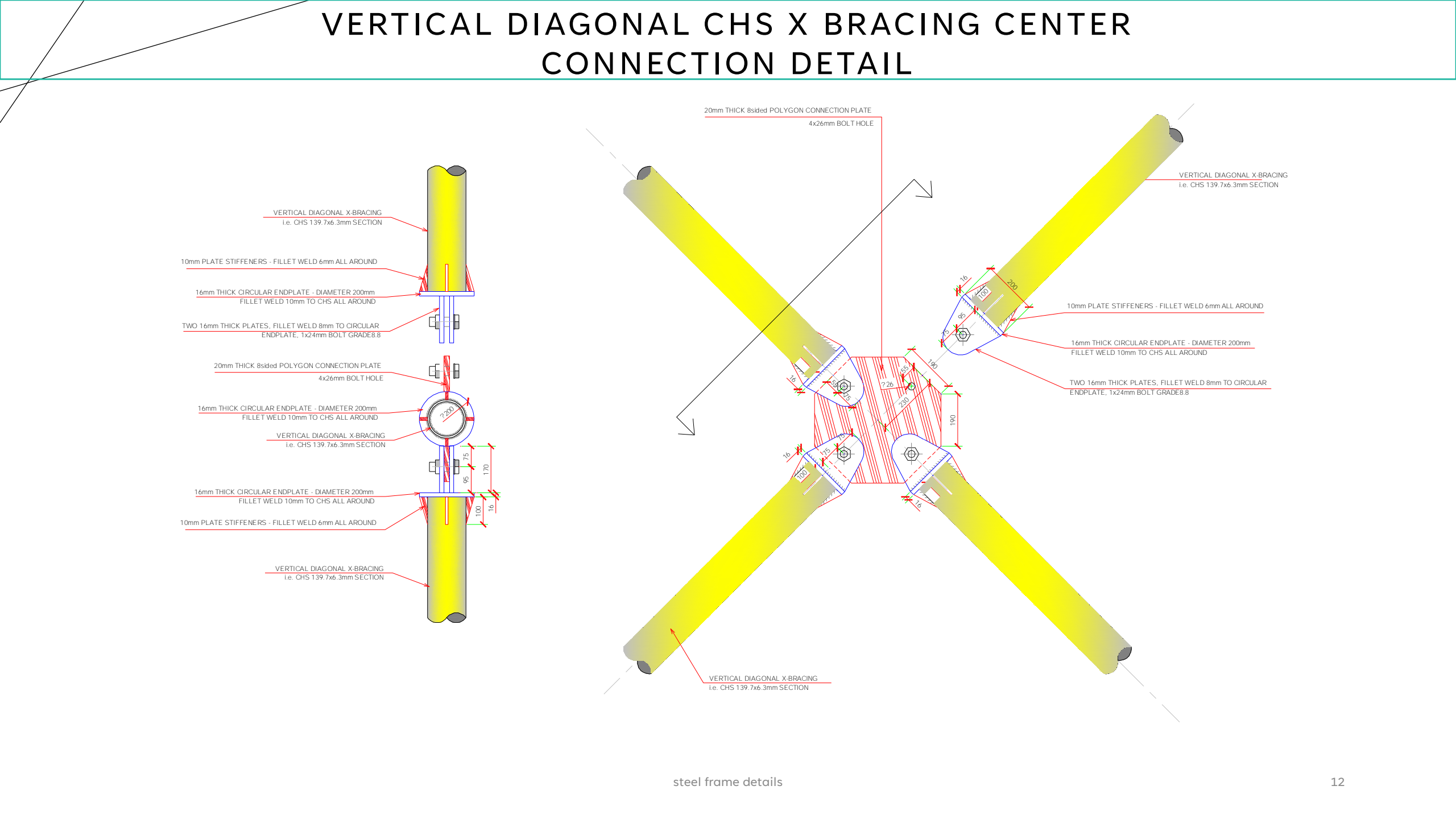
- 20mm THICK 8sided POLYGON CONNECTION PLATE
4x26mm BOLT HOLE
- VERTICAL DIAGONAL X-BRACING i.e. CHS 139.7x6.3mm SECTION
- 10mm PLATE STIFFENERS - FILLET WELD 6mm ALL AROUND
- 16mm THICK CIRCULAR ENDPLATE - DIAMETER 200mm
FILLET WELD 10mm TO CHS ALL AROUND
- TWO 16mm THICK PLATES, FILLET WELD 8mm TO CIRCULAR ENDPLATE, 1x24mm BOLT GRADE 8.8
- VERTICAL DIAGONAL X-BRACING i.e. CHS 139.7x6.3mm SECTION

Dimensions:

- 200 (Circular Endplate Diameter)
- 100 (Endplate Radius)
- 16 (Endplate Thickness)
- 75 (Endplate to Stiffener Distance)
- 170 (Total Height)
- 100 (Stiffener to Stiffener Distance)
- 16 (Stiffener Thickness)
- 226 (Polygon Connection Plate Width)
- 230 (Polygon Connection Plate Width)
- 190 (Polygon Connection Plate Width)
- 16 (Polygon Connection Plate Thickness)
- 75 (Polygon Connection Plate Thickness)
- 100 (Polygon Connection Plate Thickness)

steel frame details

12





structuraldetails

THANK YOU

Here's a € 5.00 discount coupon to get you started

Coupon Code: **GETSTARTED**

Use coupon code above during checkout